



What is Cancer ?

Dr Sarah Coninck - Medical Lead

Mary Buttle - Education Lead EOLP

Catherine Morgan-Jones - Project Lead

What is cancer and how does it start?



DNA



Outside factors

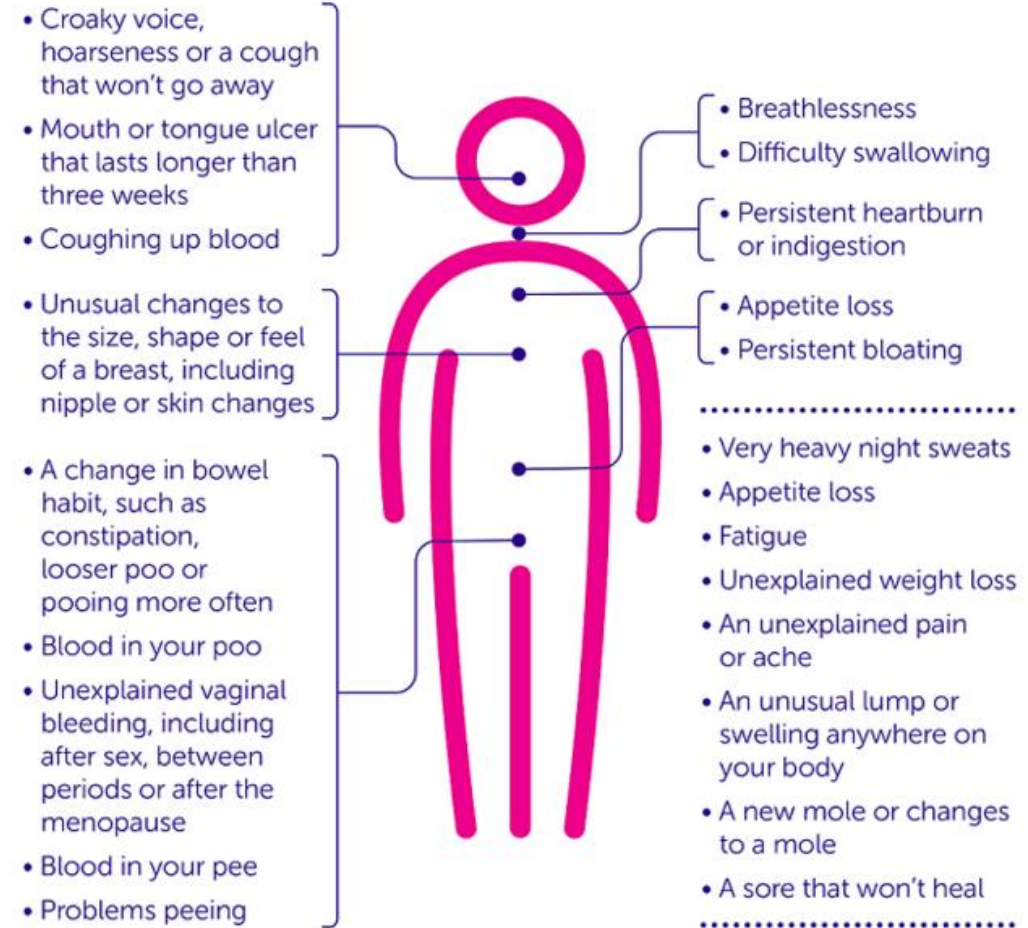


Inherited

How Does Cancer Present?

- Type Specific Symptoms
- Non Specific Symptoms
 - Unintentional weight loss >5% in 3m
 - Reduced appetite
 - Fatigue
 - Nausea
 - Malaise
 - Bloating
 - Progressive pain
- Asymptomatic

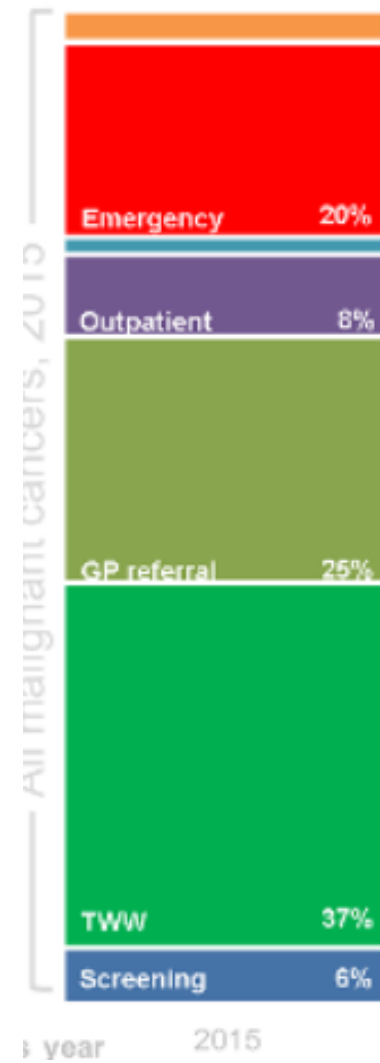
These are some of the key signs and symptoms of cancer. But if something's unusual for you, it's best to tell your doctor – even if it's not on this list.



Detection of Cancer

Identified by;

- 2WW referral
- GP referral
- Outpatient
- Emergency
- Screening





How do we categorise cancer ?

- **TNM**

- Tumour – describes the size of the tumour from T1 to T4
- Nodes – describes whether the cancer has spread to the lymph nodes from N0 to N3
- Metastasis - describes whether the cancer has spread to a different part of the body M0 to M1

- **Number Staging**

- There are usually 3 or 4 number staging for each cancer type. Stage 1 describes an early cancer that has not spread anywhere else , where a Stage 4 cancer has spread.

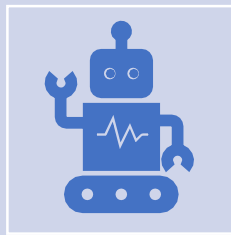
- **Grading**

- Grading is a way of dividing cancer cells into groups based on how they look under a microscope
- Grades 1- 4

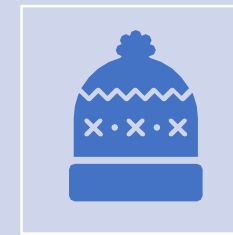
Treatment Aims



CURE



CONTROL



CLOAK